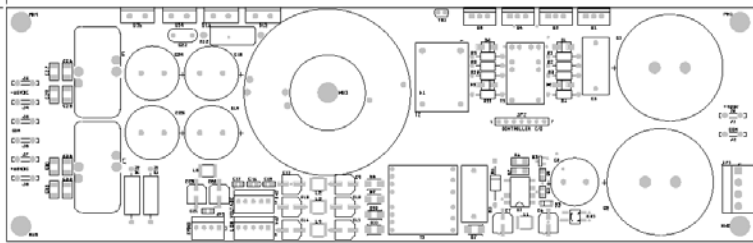


# DIGIAMPS.COM



## SMPS 3600 - 3600W switch-mode power supply (provisional info)



### SMPS 3600 specs

Rated power	3600W
Input voltage	360V DC from PFC
Output voltage	2 x 65V DC (*2)
Aux output voltage	2x15V DC + 15V DC
Operation	Full bridge smps
Max. output current	40A
EMC filter, input	On PFC board
EMC filter, output	Yes
Overtemp protect.	Yes
Soft start	Yes
Overcurrent protect.	Yes
Dimensions	180 x 78 x 35mm
Heatsink	external (small)
Available as sample	oct 2005
Available as OEM design	yes

©2005 - all rights reserved - digiamps.com (a division of [CAD Audio dk](#))

(\*2) other voltages upon request